

# DANBRO

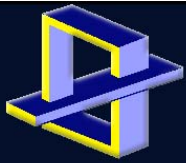
## DISTRIBUTORS

3700 South 26th Street  
Philadelphia, PA 19145

215 - 271 - 7700

### DANBRO CASE HISTORY

#### EMERGENCY BRIDGE ABUTMENT REPLACEMENT RT.559 AT WEYMOUTH RD OVER DEEP RUN HAMILTON TWP. ATLANTIC COUNTY, NJ



## South Jersey Helical Piers

"Stability from the Ground Up"

900 West Leads Ave, P.O. Box 1053, Pleasantville, NJ 08232 | P: (609) 646-4757 F: (609) 646-4758 C: (609) 369-3634



#### **OBJECTIVE:**

TO FIX THE ABUTMENTS  
SO THE BRIDGE COULD  
BE OPERATIONAL AS  
QUICK AS POSSIBLE.  
HELICAL PILES WERE  
THE QUICK  
INSTALLATION  
SOLUTION!

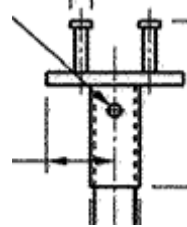




## CHANCE™

### HELICAL PULLDOWN™ MICROPILE:

- # OF PILES = 50
- SS175 WITH 8", 10" & 12"
- 5" DIA. UNCASSED GROUT COLUMN
- CHANCE™ GROUT RECIPE C - NEAT CEMENT GROUT PORTLAND CEMENT TYPE I, II
- CONSTRUCTION CAP FOR COMPRESSION AND UPLIFT



- DESIGN LOAD = 55 KIPS
- UPLIFT LOAD = 25 KIPS
- TORQUE REQ'D = 5500 FT-LBS
- AVERAGE LENGTH = 46 FEET

### SOUTH JERSEY HELICAL PIERS:

#### ART -

WE INSTALLED THE PILES AT A FAST RATE OF 13 PILES PER DAY. THIS ENABLED THE GENERAL CONTRACTOR TO QUICKLY MOBILIZE AND FINISH THE PROJECT.

THE PILES CURED TO A 5 DAY COMPRESSIVE STRENGTH = 3900 PSI AND A 7 DAY = 5700 PSI.

THE PILES WERE READY TO BE LOADED ON TIME.

#### AUTHOR:

STEVE GENCORELLI, P.E.  
STEVE@DANBRO.COM  
DANBRO DISTRIBUTORS  
215-271-7700

