



## MacLean Civil Products Teams with U.K. Distributor Helifix to Supply Helical Piles for Award Winning Display at 2017 Chelsea Flower Show



MPS Civil Products

**MacLean Power Systems  
Civil Products Group**  
481 Munn Road, Suite 300  
Fort Mill, SC 29715  
800-325-5360  
[www.macleandixie.com](http://www.macleandixie.com)

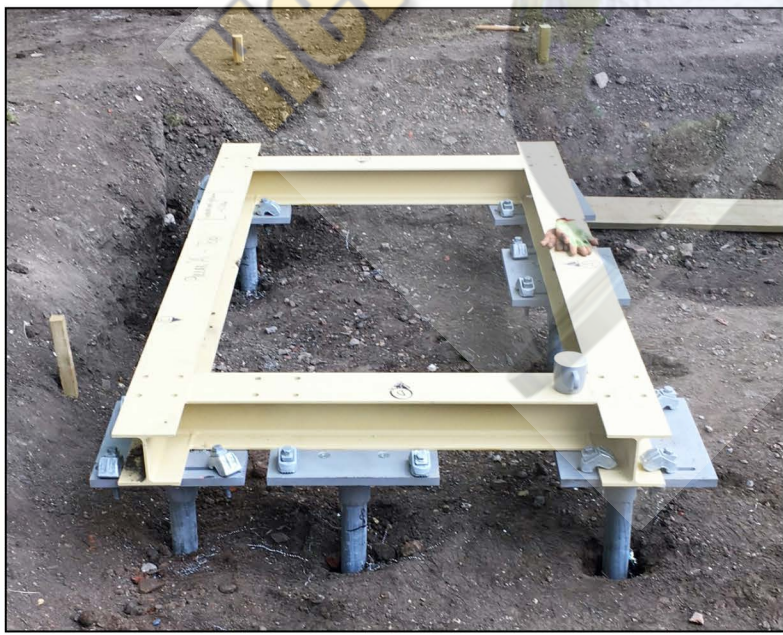


<b>Project Name &amp; Location:</b>	2017 Chelsea Flower Show - Chelsea, England
<b>Project Date:</b>	Summer 2017
<b>Project Type:</b>	Temporary Deep Foundations & Structure Connection Frame
<b>Helical Pile Installation Contractor:</b>	Charterbuild - <a href="http://www.charterbuild.co.uk/">http://www.charterbuild.co.uk/</a>
<b>Main Garden Contractor:</b>	Crocus - <a href="http://www.crocus.co.uk/">http://www.crocus.co.uk/</a>
<b>Helical Pile Distributor:</b>	Helifix Distributors - <a href="http://www.helifix.co.uk/">http://www.helifix.co.uk/</a>
<b>Helical Pile Specifications:</b>	Model MCP P28 2.875" RCS Helical Piles with 8",10",12" Helix Bearing Plates, New Construction Pile Caps, 15 KIP Design Load, Galvanized
<b>Soils &amp; Embedment Depth:</b>	Mix of Alluvial Deposits and Clays, all Overlain by 3 Meters of Fill (top soil, rubble etc.) Average Pile Embedment 12-16 Meters
<b>Project Timeline:</b>	(2) Days
<b>Helical Pile Manufacturer:</b>	MacLean Power Systems - Civil Products Group - Fort Mill, SC

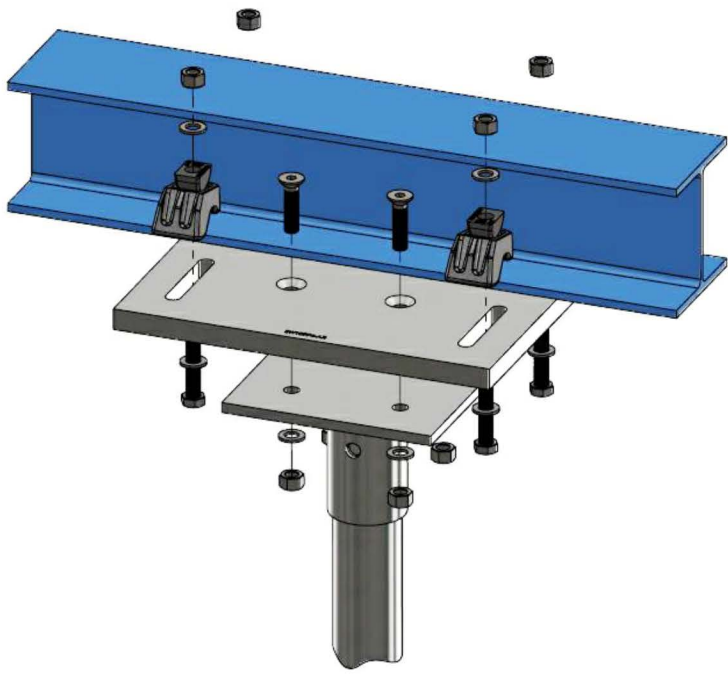
Working with the company's United Kingdom distributor, Helifix, MCP supplied (12) helical piles as deep foundations for the award-winning James Basson's M&G Garden. The impressive display featured nearly 150 different plants across several species. M&G Garden was awarded Best Show Garden at the 2017 Chelsea Flower Show, for which Helifix supplied some unseen, but critical, components. The garden featured monumental blocks of limestone of varying sizes and the two large stone clad steel towers, at 8m and 5m high, required temporary deep foundation support.

The main garden contractor, Crocus, contacted Helifix who supplied (12) MCP, 2.875" round shaft piles (model P28 with 8"-10"-12" helices) which were rapidly installed by their approved installer, Charterbuild. The helical piles were installed vertically using a hydraulic torque motor at the specified spacing and to the pre-calculated torque specifications. This installation required no excavations or soil removal.

The helical lead section was installed first and followed by extension sections until they reached the load bearing strata. Each installed pile was then fitted with an engineered flat top plate bracket. The stone tower exhibits were supported on a steel frame spanning between the piles. The steel frame was connected directly to the pile heads above ground via a Lindapter clamp arrangement. This clamp arrangement offers an ideal connection for temporary or modular buildings as no concrete is required thus making the installation very quick and eco-friendly.

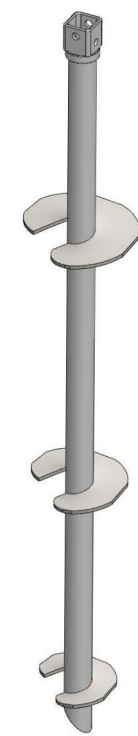


The Royal Horticultural Society does not allow any major excavations to be carried out and all means of structural support used for the show were required to be removed once the show was over. Additionally, tree roots and other obstructions had to be avoided when installing foundation elements for the garden design. The ideal solution, overcoming all these potential problems, was provided by Helifix, using MacLean's International Code Council (ICC) - certified 2.875" round shaft helical piles.



The steel frame was connected directly to the pile heads above ground via a Lindapter clamp arrangement

Once the show was complete, the stone columns were dismantled and the MCP piles were extracted from the ground just as easily as they were installed.



2.875" MCP Model  
P28 Lead with  
8",10",12" Helix  
Bearing Plates