

Helical Piles of New York Installs (19) Chance® Helical Pile Deep Foundations for a New ICF House in Bellmore, NY - Original House Destroyed by Super Storm Sandy

Winter/Spring 2015



Helical Piles of New York
1145 William Floyd Pkwy
Shirley, NY 11967
516-250-2515
www.helicalpilesny.com



Project Name & Location:	New ICF House - Bellmore, NY
Project Date:	Winter/Spring 2015
Project Type:	Helical Pile Deep Foundation
Helical Pile Installation Contractor:	Helical Piles of New York - Div. of High-Rise Industries
Engineering Firm:	R Shatarah Consulting Engineers - Syosett, NY
Helical Piles Specifications:	(19) Helical Piles 1.5" SS5 with 8",10",12" Helix Bearing Plates; 20 Ton Ultimate Capacity; Galvanized
Soils & Embedment Depth:	Sand and Bog. Average Pile Embedment 19 ft.
Project Timeline:	Helical Pile Installation - 1.5 Days
Helical Pile Manufacturer:	A.B. Chance - Centralia, MO

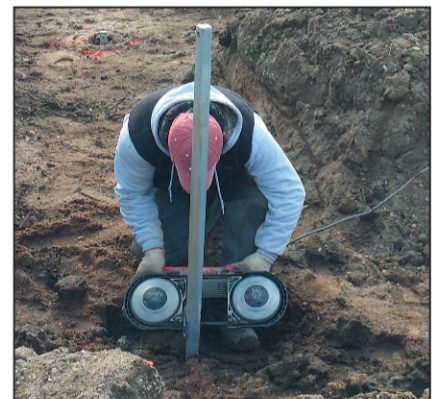


Helical Piles of NY, a division of [High Rise Industries](#), with headquarters located in Shirley, NY, recently completed installing (19) Chance Helical Piles as deep foundations for a new home being built using Insulated Concrete Forms (ICF) to replace the original house that was destroyed by Super Storm Sandy.



Helical Piles of NY was contracted to do all of the excavation of the destroyed house and remove some fill from the site. Crews then dug the new footings in preparation for installing the helical piles and the ICF forms.

(19) A.B. Chance SS5 1.5" Round Corner Square shaft piles with 8",10",12" helix bearing plates were installed to an average depth of 19 feet. Pile installation was completed in 1.5 days, piles were cut to the specified elevation, and new construction pile caps were affixed to the piles.



After Super Storm Sandy destroyed the owner's original house, the decision was made to start over with an ICF house to take advantage of the energy savings, and the new house will have a first floor living space that is (2) feet above the new BFE flood elevation level requirement.

[Click here to see a video of the project](#)



Helical Piles of New York
1145 William Floyd Pkwy
Shirley, NY 11967
516-250-2515
www.helicalpilesny.com