

Foundation Stabilizers Installs (45) MVP Helical Piles for a Large Swimming Pool Project in LEFRAK CITY in Queens, NY



Foundation Stabilizers, Inc.
5 Nelson Avenue
Wappingers Falls, NY 12590
845-298-2011
www.foundationstabilizers.com/

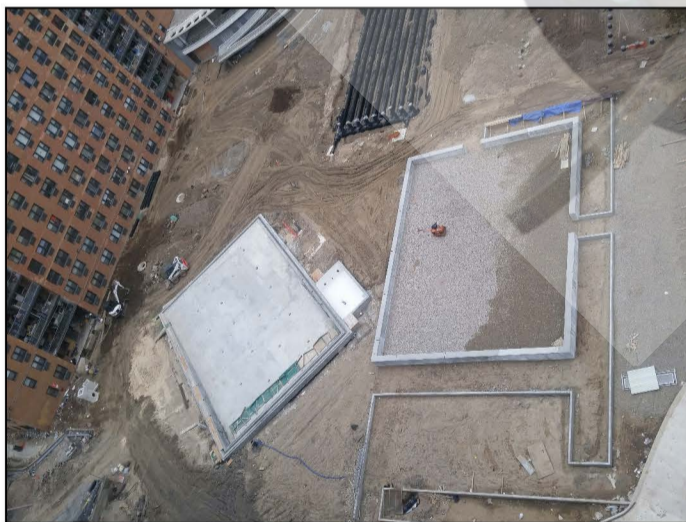


Project Name & Location:	Community Swimming Pool - LEFRAK CITY - Queens, NY
Project Date:	May 2016
Project Type:	Deep Foundations
Helical Pile Installation Contractor:	Foundation Stabilizers, Inc. - www.foundationstabilizers.com
Design Engineer:	5D Engineering & Architecture - Melville, NY
Helical Pile Distributor:	Premium Technical Services - www.premiumtechnical.com
Helical Pile Specifications:	1.75" RCS Lead with 8",10",12",14",14" Helix Bearing Plates Followed by P35H 3.50" x 3.00" Wall MVP Grouted Helical Piles , (40) Tons Compression & (20) Tons Tension Ultimate Capacities, Galvanized, 8" Grout Column for Upper 35 ft.; 10"x10" Pile Cap
Soils & Embedment Depth:	(14) Feet of Fill; Peat; Clay; Average Pile Embedment 50-60 ft.
Project Timeline:	(3) Weeks
Helical Pile Manufacturer:	MacLean Power Systems - Civil Products Group - Fort Mill, SC



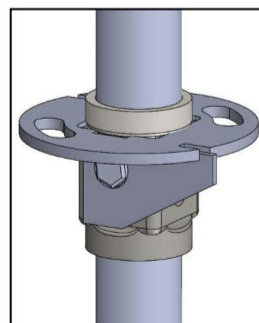
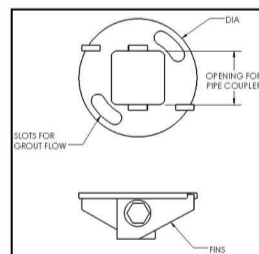
Property managers for the multi high rise community of Lefrak City in Queens decided to build a large 72' x 50' swimming pool for residents to enjoy.

Foundation Stabilizers was contracted to install helical pile deep foundations to provide (40) tons of compression capacity and (20) tons of tension capacity. The soils on the site presented some challenges for pile installation as there was a significant amount of fill and debris in the first 14 ft. that necessitated some pre-drilling for some of the piles.

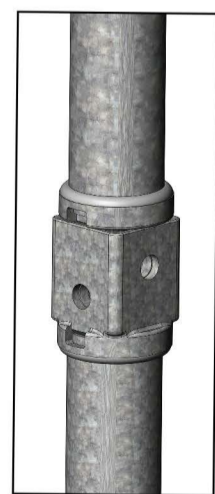


MacLean Civil Products MVP piles with 1.75" RCS lead sections were specified with 8",10",12",14",14" helix bearing plates followed by 3.50" O.D. X .30" wall round shaft extensions to reach competent bearing soils at an average depth of 50-60 feet. Additionally, an 8" grout column was specified for the upper 35 feet for each MVP pile.

The project was successfully completed in (2) weeks.



Cutter Plate for Grouted Round Shaft or Round Corner Square Bar Helical Piles



Patented Square-On-Square Coupler System

