

CASESTUDY

NOV 2023

33 HELICAL PILES STABILIZE
BIG BEAR LAKE, CA DUPLEX
THAT SETTLED 6+ INCHES

FIND MORE CASE STUDIES AT:
DALINGHAUSCONSTRUCTION.COM

NEVERSETTLE



HELICAL PILES ABLE TO LIFT & RECOVER 6 INCHES OF SETTLEMENT AT HILLSIDE MOUNTAIN COMMUNITY DUPLEX

PROJECT BACKGROUND

An HOA contacted our team to take a look at one of the duplexes in their community with apparent signs of settlement. Our specialist, Joe Harris, had previously worked with the community on similar issues with another property so he had good idea of what to expect during his evaluation. The HOA advised that the homeowners were seeing large drywall cracks in several areas as well as extremely sloped floors. This Big Bear Lake hillside was nestled between a golf course and endless trees.

PROJECT DESIGN PHASE

During the evaluation Joe immediately could feel the sloping floors throughout the entire property. After taking a couple of measurements with a zipline altimeter he headed down into the crawlspace to find two large stem walls helping to support the duplex.

Joe was able to start designing a repair plan after compiling his data and measurements. He knew addressing the stem walls would be extremely important in achieving the HOA's goal in recovering some of the settlement and fixing the sloping floors. 33 helical piles would be needed in total, with 7 on the stem walls in the crawlspace.

DALINGHAUS SOLUTION

With the help of Helfrich Associates, Joe's repair plan was turned into engineered plans and permits were able to be pulled. Our crew pulled out quite a few massive boulders from their helical pile locations, but were able to make quick work of the excavations and installation. Helicals found competent soils at an average depth of about 28 feet and the crew was able to successfully recover the majority of the 6 inches of settlement.

INSTALLATION OVERVIEW

TOTAL HELICALS

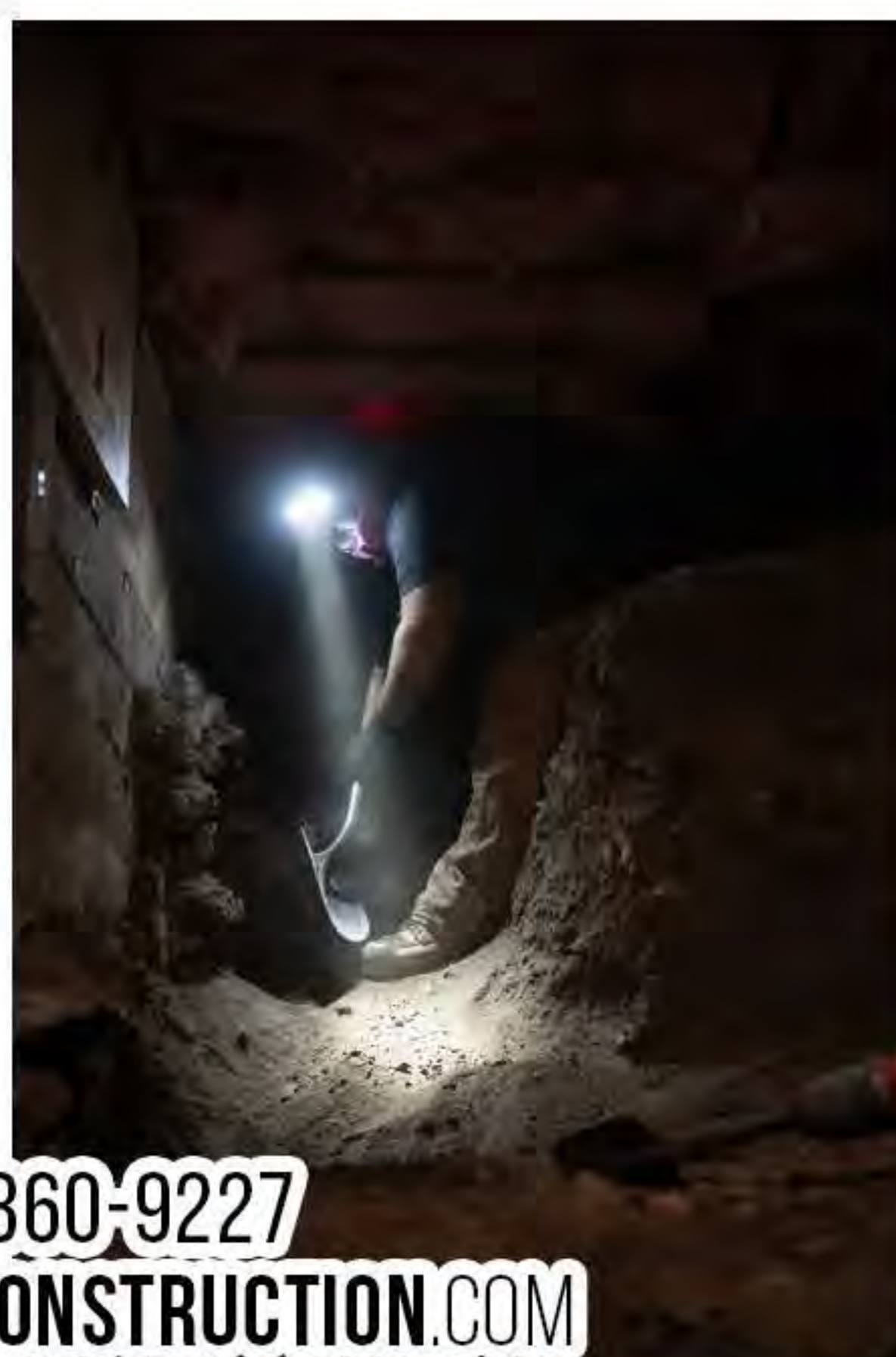
33

HELICAL PRODUCT

TAF288

PRODUCT MANUFACTURER

ECP



877-360-9227

DALINGHAUSCONSTRUCTION.COM